



---

FOR IMMEDIATE RELEASE

Arborescence is part of our research approach to integrating greenery with well-being.



The 35-metre-high vertical garden is designed through an open call for the “IMAGINE ANGERS” competition. The building exemplifies how architecture can be reimagined to connect nature with the urban environment, and from the Maine River to the city centre. Thereby, serving as a distinctive landmark for the horticultural capital.

Leveraging **our France-Singapore culture**, Arborescence distinguishes herself with the abundance of greenery present throughout all levels of the project. The orientation of the building ensures that each living space benefits from generous natural light, cross-ventilation, and unobstructed views for an environment that advocates for well-being.

In the same vein, an intergenerational strategy guides the overarching programming narrative of the development. Different walks of life including pre-schoolers, working adults, and seniors converge at a shared central garden. Accessible to all during the day, the garden transforms into a vibrant exchange hub between generational groups to **strengthen social links and nurture empathy**.

Similarly, bioclimatic efforts are bolstered through green roofs and terraces for thermal insulation, strategies reducing environmental impacts **and promoting biodiversity while addressing urban density challenges**.

In embodiment of an innovative and integrative approach, Arborescence presents a holistic sustainable solution that connects Nature, People and the urban environment.

## BIOPHILIC ARCHITECTURE

The Greek term "biophilia", refers to bio (life) and philia (love). First introduced in the 1980s by biologist and naturalist, Edward Osborne Wilson, he identified being in touch with nature is essential for our well-being. This philosophy is embedded in the core of Arborescence's biophilic architecture, where plants are present at every level. This **creates a harmonious balance between people and their surroundings** for the building's environment.

The reimagination of enhanced healthy living is further supported by elements that include: outdoor spaces filled with perennials and shrubs, large bay windows allowing generous amount of natural light, and breathtaking views from the terraces. Combined with the use of natural materials like wooden soffits, the **soft, enveloping architecture** completes the biophilia methodology for a stress-free urban living that uplifts moods and a more positive state of mind.

By continuously creating natural integration opportunities at various layers, biophilic architecture addresses our fundamental need to connect with nature in an urban context.



## WELL-BEING

Evident in every design intention of the architectural ensemble, is the advocacy of well-being.

As opposed to conventional forms, Arborescence offers a well-being-focused approach to urban living through greenery and wood while addressing urban density.

Starting with the heart of the development – the tall tree rooted in the shared garden. This tree of life creates a naturally conducive environment for relaxation by filtering the southern light and providing generous shade during summer. The building's architectural geometry mirrors its similar fluidity for a greater sense of comfort.

Large terraces **extended from the living spaces** provide additional comfort during summer. In addition to the greenery, the use of wooden soffits assists in naturally enveloping residents in a **protective cocoon** – similar to the **warm atmosphere** of a treehouse. This sense of personal well-being echoes in the communal experiences – where the dynamic planning of shared indoor and outdoor spaces **offers a diversity of uses** for different people to meet. Thereby, facilitating the quality of social interactions for all.







## BIOCLIMATISM

From its inception, **Arborescence** effortlessly transforms constraints into opportunities.

The multi-oriented plot enables the development to make the best use of prevailing winds. For instance, a canyon has been sculpted from the massing towards the West to provide refreshing cool breeze and ensure proper ventilation at the heart of the ensemble during summer. Shielded by a compact structure and continuous frontage, the southwest façade benefits from enhanced weather protection.

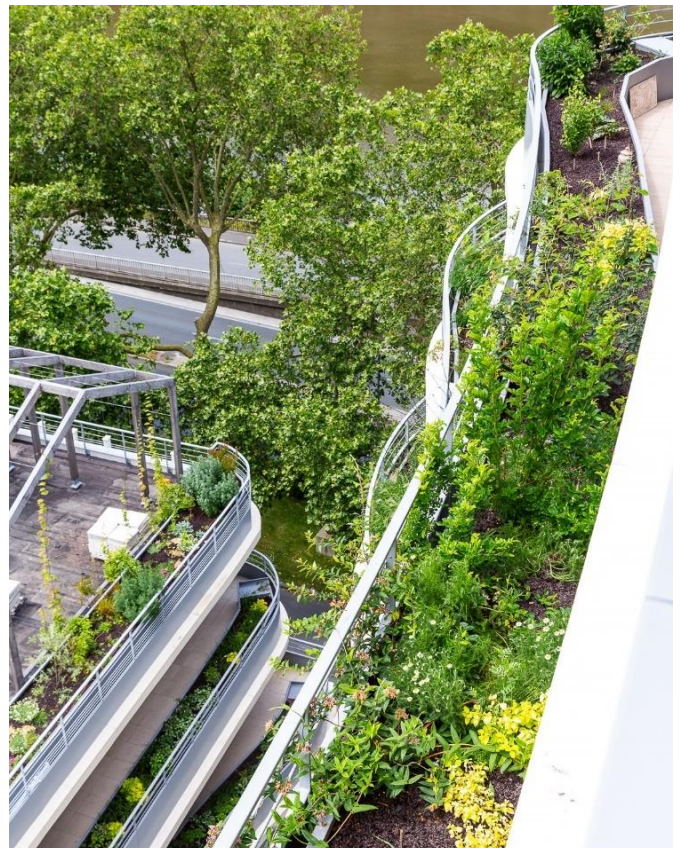
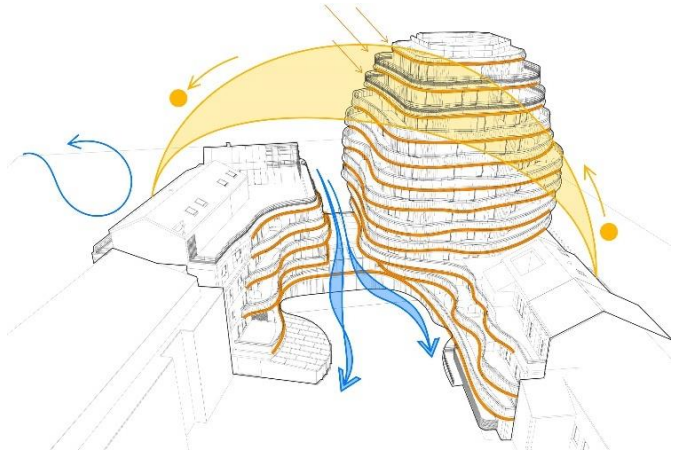
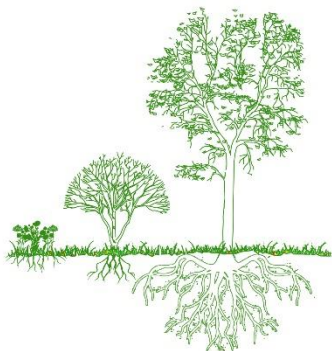
The building unfolds in a wide South-facing façade, and extends from East to West, like two large open arms. This configuration follows the sun's path and maximises solar gain in winter.

On the contrary during summer, extended balconies function as sunshades, simultaneously reducing direct sunlight on the facade. While the undulations of Arborescence verdant terraces allow every outdoor area to enjoy **unobstructed sky views**. Contributing even more benefits to the users, each housing comes with natural cross-ventilation.

Arborescence's three buildings are designed to have compact massing to ensure facades possess **high thermal performance**. Due to this, the generous open soil garden allows rainwater to permeate while supporting the growth of the greenery to intensify cool islands effects. Thus, checking the bioclimatic list.

### Vegetation in key figures:

- 3 800 perennials
- 180 plant species
- 220 shrubs and hanging plants
- 500 m<sup>2</sup> of planters
- 1km of watering system in planters







## TECHNICALITY OF THE VERTICAL GARDEN, A RESPONSE TO DENSITY

Unlike conventional developments, **Arborescence** advocates for biodiversity through incorporating green roofs, lush terraces and the open soil central garden. Collectively, they restore a typically lost ecological corridor at urban scale.

Developed on a plot of 2600 m<sup>2</sup>, the ensemble offers a total floor area of 8900 m<sup>2</sup>. The programme comprises **122 housing units together with ground floor amenities, such as a nursery, senior living and offices**. Greeneries present at all levels and open soil garden within the compact compound offer a harmonious density, cleverly balancing inhabited, shared and outdoor spaces, while constituting an alternative to urban sprawl.



The various green and landscaped elements throughout the ensemble, improve overall thermal comfort while reducing the need to rely on active systems, ultimately improving the air quality for all.

### Arborescence in key figures:

- Total floor area: 8 200 m<sup>2</sup>
- Land area: 2 600 m<sup>2</sup>
- Surface area: 750 m<sup>2</sup>
- NF HABITAT NF HQE label



## DIVERSITY AS A SOCIAL LINK

The guiding approach for all shared common spaces is **centred around an intergenerational programme to encourage interactions across diverse groups**. Beyond fostering such enriching encounters, these common spaces contribute to a tighter and interwoven social fabric.

**Connecting all the programmatic strategies is the central garden that is designed to converge all circulation routes and bring people together**. Made accessible for all during the day through a porch entry, pre-schoolers, working adults, seniors, members of the public and residents are welcome to exchange experiences and community-making in a serene atmosphere.

In continuation of the sense of community spirit, **green terraces are made accessible for all residents at different storeys**. These landscaped spaces provide informal meeting places between neighbours to encourage deeper sense of belonging within the ensemble.





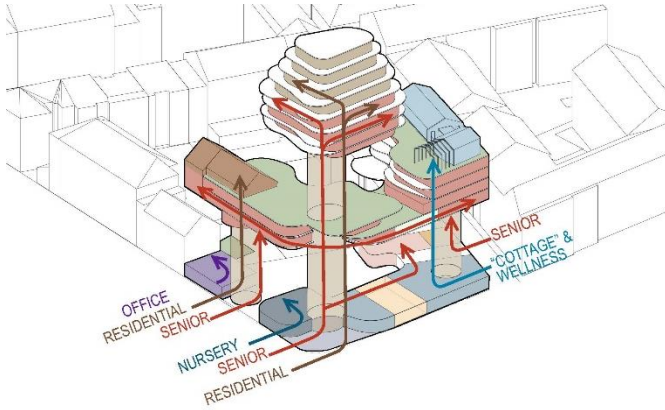


## INTERCONNECTION OF PROGRAMMES AND ARCHITECTURAL RESPONSE

The exceptional **site** has allowed to articulate the programmatic blend across three entire facades. The architectural response successfully incorporates technical constraints while addressing tight regulations to offer **dedicated accesses and vertical circulation to each programme**. These are simply superimposed in “layers” which inform their spatial planning:

- **Lower strata:** Common areas of Senior Living, Offices, Nursery, Residential Lobbies and the Central Garden
- **Intermediate strata:** Senior living that includes indoor greenhouse and outdoor common areas with planted terraces
- **Higher strata:** Residential units and temporary short-stays

This enables dedicated routes for different functions while still facilitating an efficient journey with daytime all-access meeting points such as the hall and the central garden.



## INTERGENERATIONAL SPACES

Under the broad canopy of Arborescence, the programmatic strategy largely mirrors multi-generational homes that were once prevalent. Common spaces become places where different stages of life – childhood, adulthood, golden ages – serendipitously meet. For instance, the senior living welcomes the community at large within their hall space for **more organic intergenerational social opportunities**.

This cultivates a more vibrant form of creating a sense of place that is non-linear while nurturing empathy for one another.

### Arborescence in key figures:

- 11 floors standing at 35 m high
- 29 apartments (from the 6<sup>th</sup> to the 11<sup>th</sup> floor)
- 1 Ovelia senior residence with 94 units (from the 1<sup>st</sup> to the 5<sup>th</sup> floor)
- 1 Nursery with 20 cribs
- 3 urban “cottages”
- 1 rooftop with a wellness centre
- Shared gardens and a vegetable garden
- Foundations: 35-metre piles





## DIVERSITY OF HOUSING TYPOLOGIES

Shaped like a tree, the **unique morphology of Arborescence** is arranged in layers where housing radiate from the “trunk”. This design provides multiple **orientations of varied views and cross-ventilation**. As each layer narrows upwards, diverse housing typologies and configurations are generated which also accommodate for different audiences.

On each opposite side of the U-shaped podium, more typical Senior Living typology are inserted while benefitting from various orientations, vistas and immediate urban context. The last side facing the Maine River integrates so-called suspended patios that while expanding the living spaces also act as acoustic buffers from the traffic lane.

## We would like to thank:

- **Vinci Immobilier**, the developers, for their repeated trust since 2016 in the research and innovation projects developed together: Paul-Michel Roy, Eric Boscherie, Sylvain Breton, Marin Marti, Isabelle Briand and Julie Marin.
- **The masterplanner, Alter** and the **City of Angers** for their trust and commitment.
- **Crespy-Aumont architects** for this magnificent collaboration and for the excellent site supervision carried out by **Aur lie Chailloux**.
- The **landscape architects MOZ** and **Guillaume Sevin** for their brilliant app to the landscape and for the perfect implementation.
- The Structure engineers **Serba-Novam**, the MEP engineers **Nergik**, the acoustic specialists **Reflex acoustique** as well as **SOCOTEC**, security and safety specialists.
- **All the Builders, Contractors, Craftsmen and the makers that constructed and brought to life Arborescence**.
- **Christophe Leray** of Chroniques d'Architecture for his wonderful writing during the competition stage.







---

**About WY-TO Group:** Guided by our philosophy, “**Design with A Cause**”, WY-TO Group combines research with a Planetary well-being approach in the design of cities, places and spatial narratives for People.

The design practice was first founded in Singapore in 2010 and later co-founded in Paris in 2012. Our combined Asia and Europe reach has provided our clients in government services and private sectors to reap the systemic benefits of a global outlook and localised design thinking. We address present-day challenges coherently with our advocacy for climate sensitivity and regenerative design in the fields of Urban Planning and Place Design, as well as Architecture (FR). Outlining them are our Green Commitments derived from international benchmarks, adapted local policies, and the collective demonstrations of design outputs from our projects. We view Experiential Design as a leading methodology in our evidence-based design process. Our focus broadens to enhance distinct identities and characters with our experience in developing scales of Culture Curation, Exhibition Design and Visual Communication.

**We believe that only by grounding green objectives with strong community-driven perspectives can design solutions be made relevant and resilient in wider contexts.**

**For more information:**

**(FR) Pauline GAUDRY:** [contact@wy-to.com](mailto:contact@wy-to.com)

**(EN) Audrey TAN:** [at@wy-to.com](mailto:at@wy-to.com)

